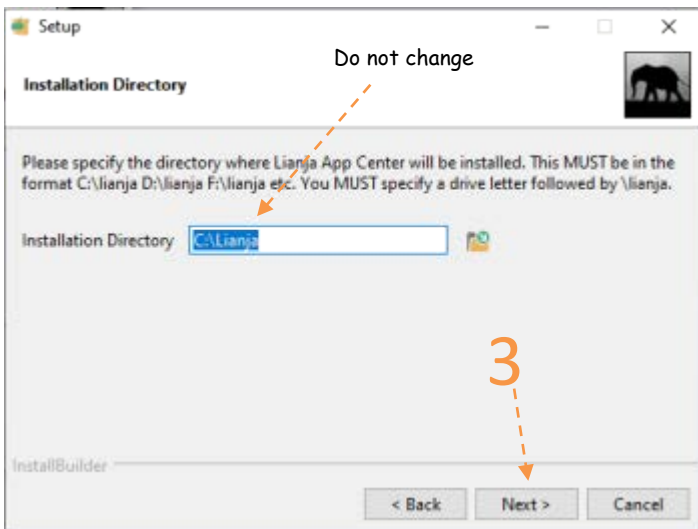
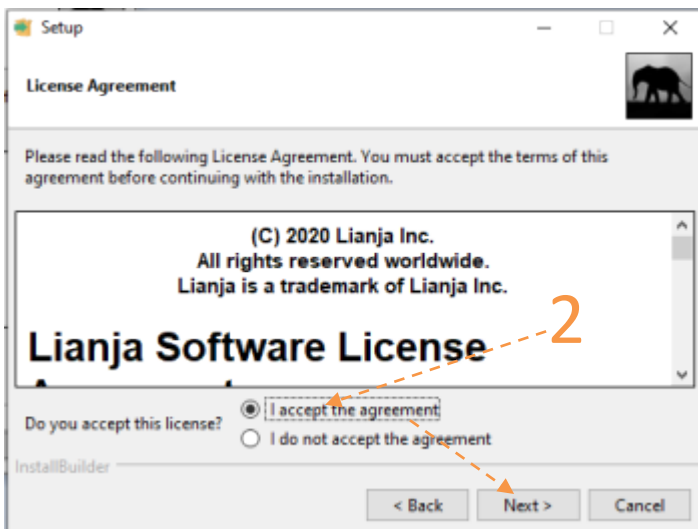
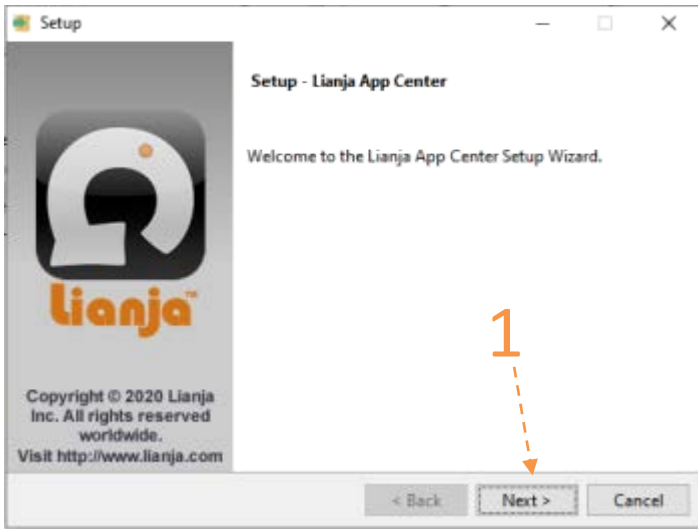


Installation 1 of 2 (1st Part: Lianja App Center)

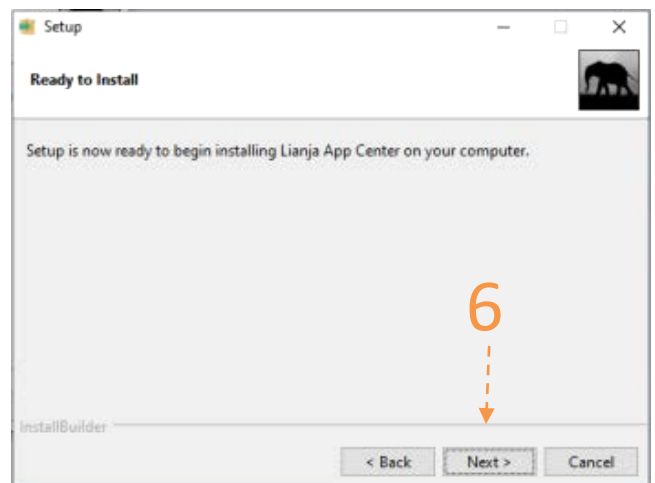
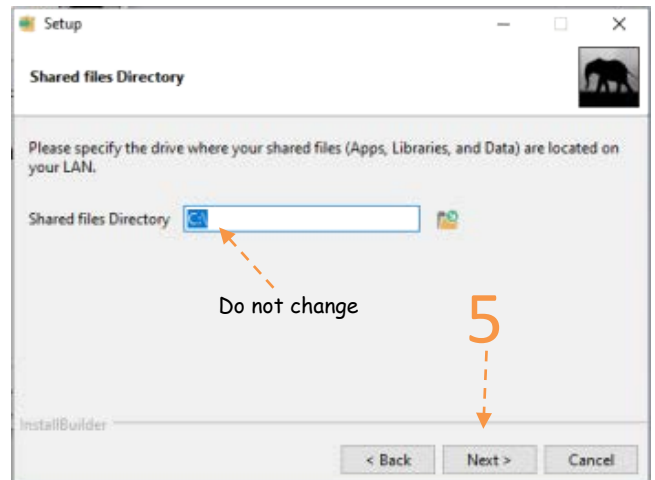
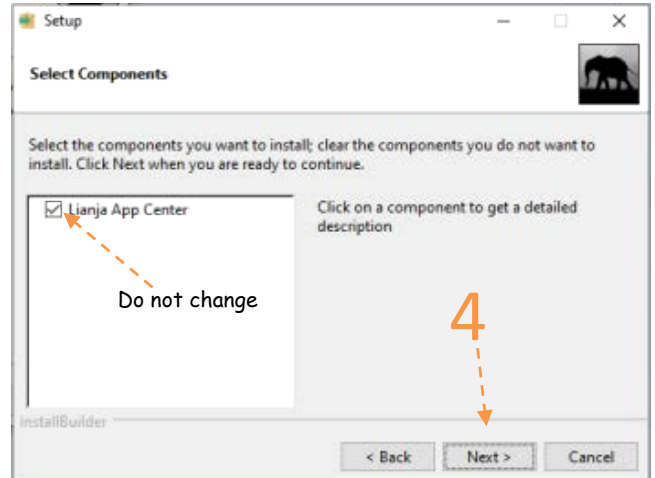


Readme File

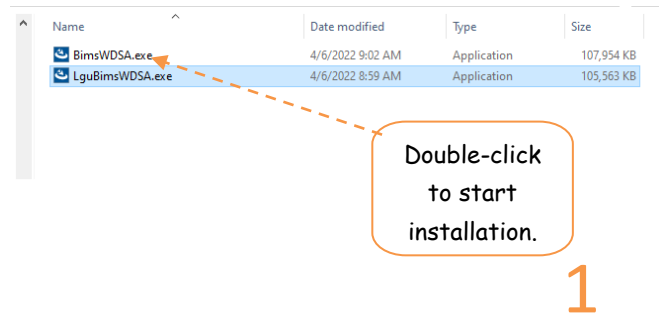
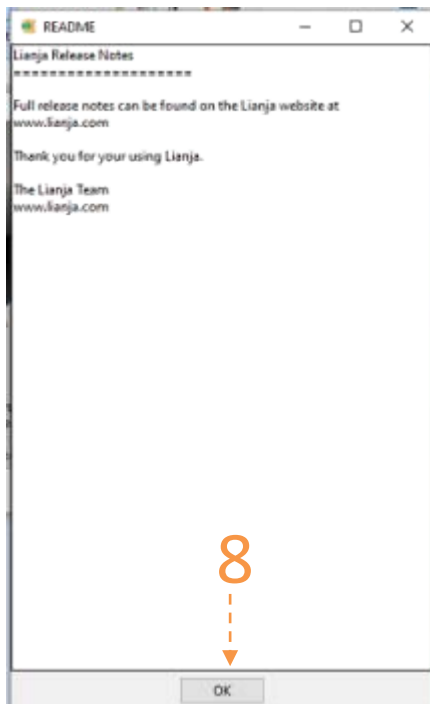
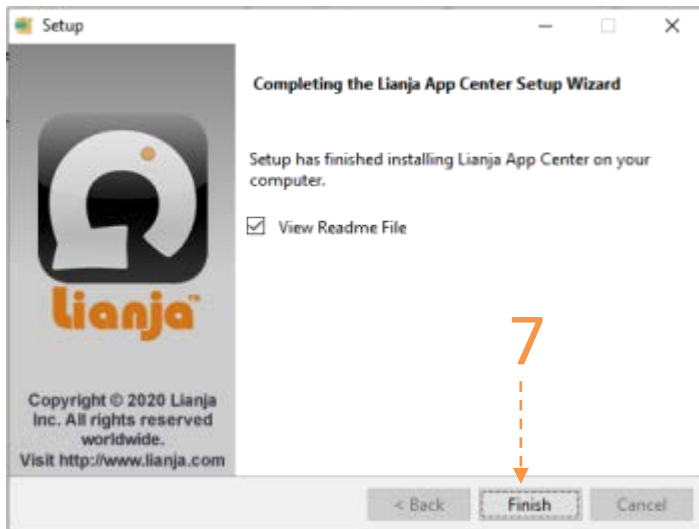
Installation Files:

1. LianjaAppCenter-5.5.1-windows-installer.exe - - This is the first part of the installation, installing the Lianja App Center. The Lianja App Center is where all the apps will be displayed in a tiles format
2. BimsWDSA.exe - - This is the second and last part, where the apps are built and coded. This software was developed based on Lianja App Builder 5.5.1.

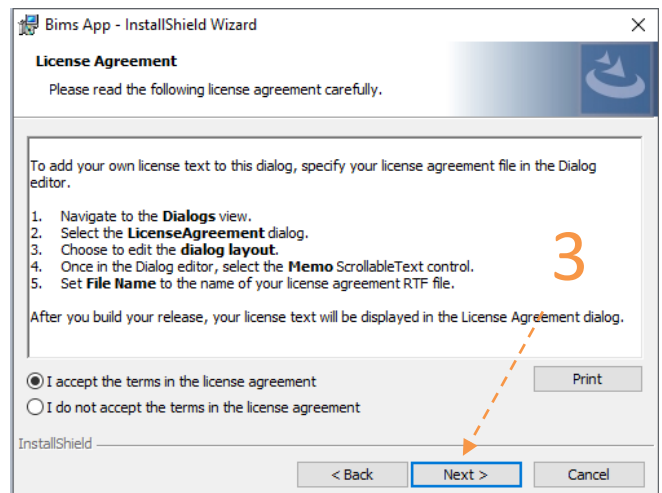
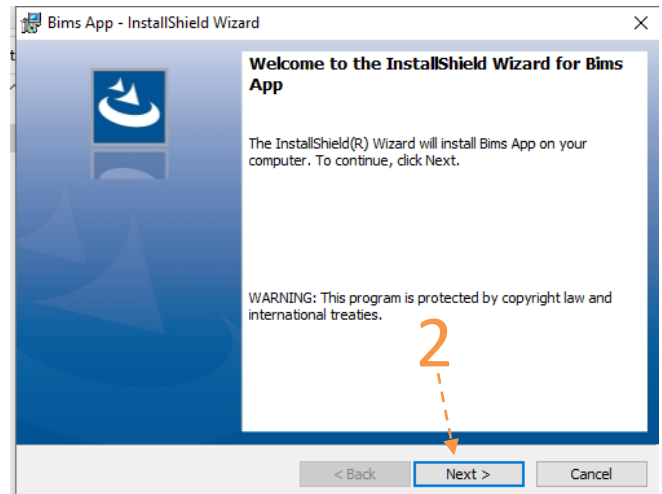
Following are screen shots from start to finish of the installation process.

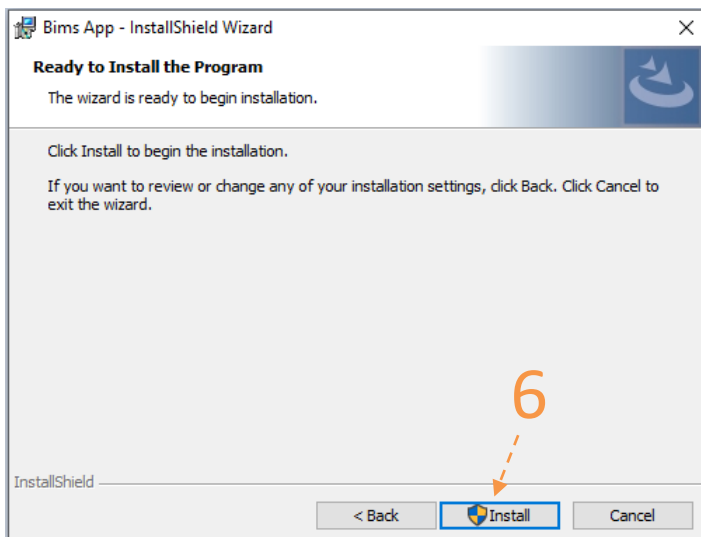
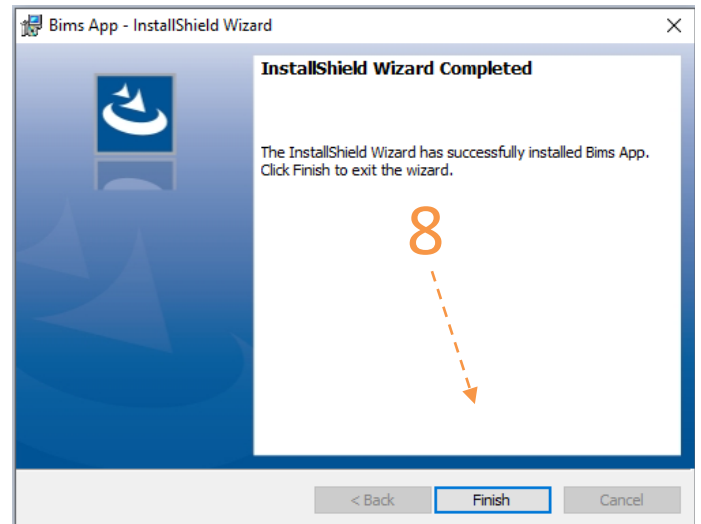
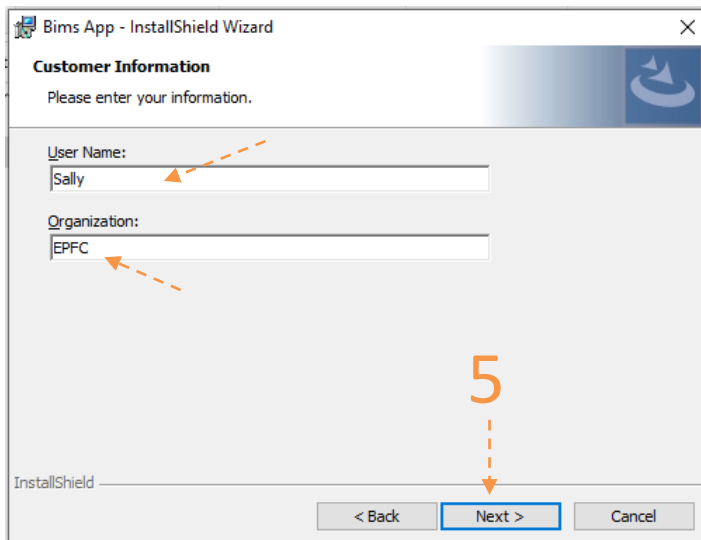
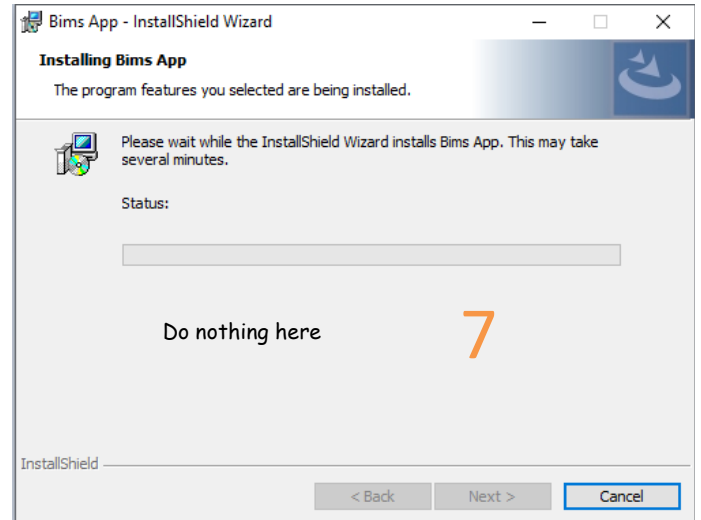
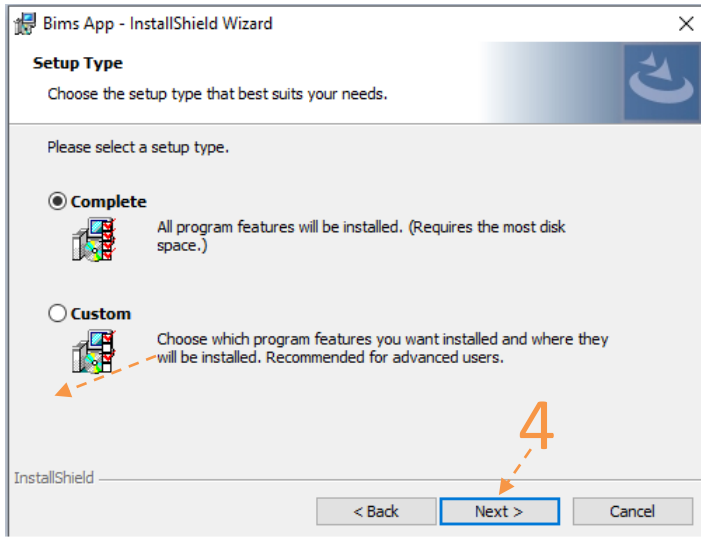


Installation 2 of 2 (2nd Part: Bims App)



2

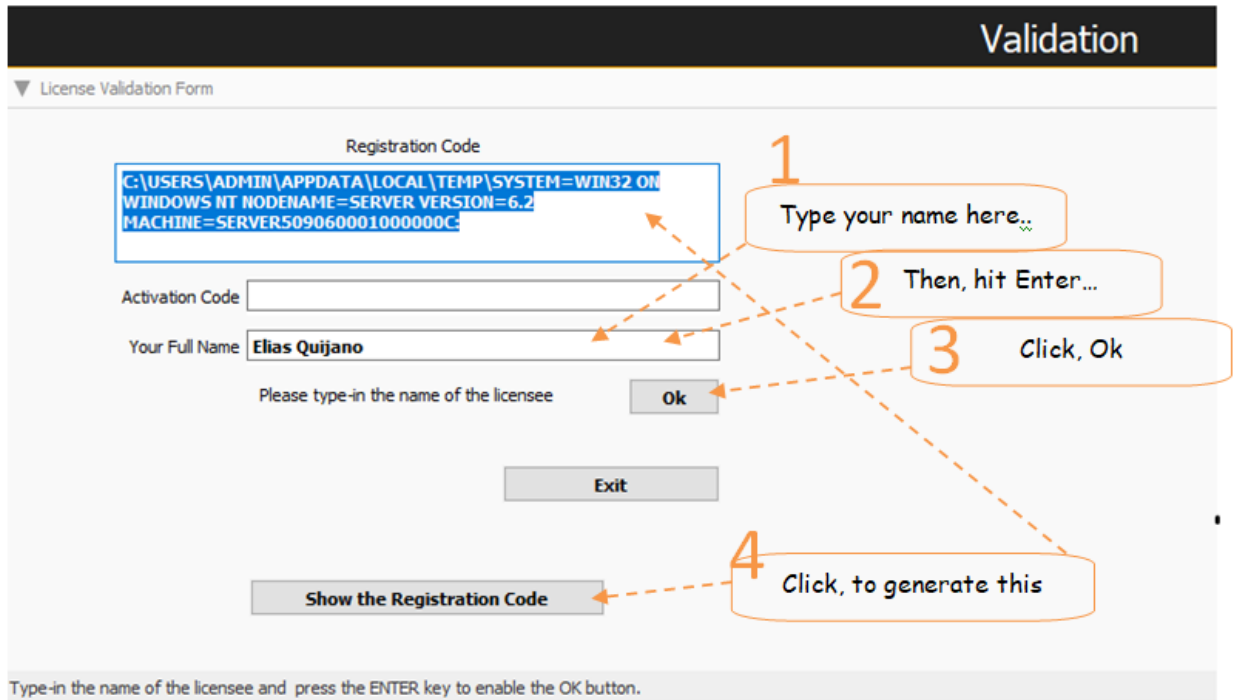




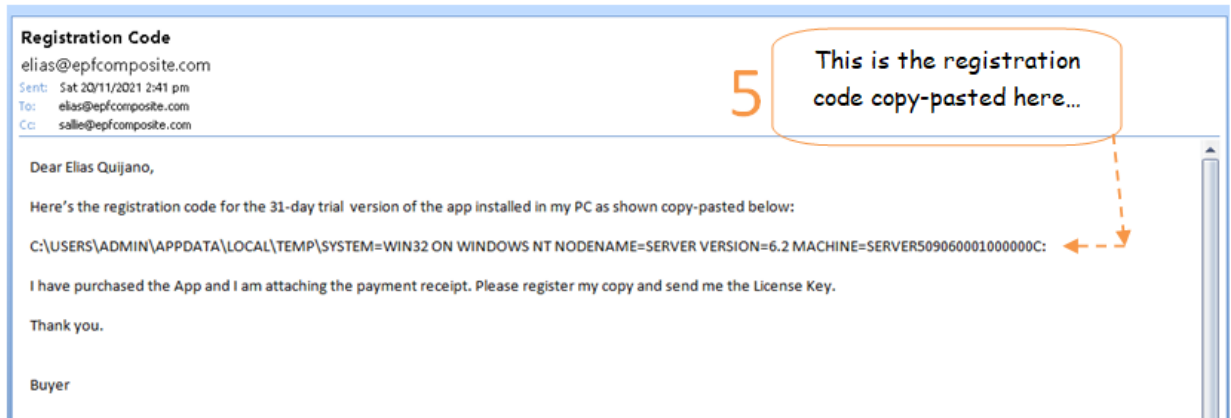
Congratulations! You have successfully completed the installation.

How to activate Bims App using the one-time License Key

1. From the App Center, run the validation App;



2. Create an email and copy-paste and send the registration code as shown below,



3. Upon receipt of your email, we will immediately put the one-time License key into the shipping package and copy it to the USB flask disk along with the other files (or email it to you if you buy it directly from the online store), hence the files in the USB flash disk are as follows:
 1. *BimsWDSA.exe* (Setup file for the Bims App) – this is your backup copy.
 2. *LianjaAppCenter-5.5.1-Windows-Installer.exe* (Setup file for the Bims Windows Platform)
 3. *Bims_app_abstract.pdf* (an abstract for Bims App)
 4. *Bims_readme_installation_setup.pdf* (Installation Instructions) - please read before installing!
 5. *License_key.txt* (your Bims App License Key. Or, it may be sent to you by email or other means available.)
4. We will Ship the package thru our shipping provider.

5. Run the VALIDATION app from the Lianja App Center. If you have any doubt or questions, please feel free to email us or PM us in my facebook account 'Elias Quijano', or by mobile phone: 0917-179-9307.

The screenshot shows a 'License Validation Form' with the following fields and buttons:

- License Key:** A text box containing a masked key: ****_****_****_****_****_****. An orange arrow points to this field from callout 6.
- Your Full Name:** A text box containing 'Elias Quijano'. Below it is the instruction 'Please type-in the name of the licensee' and an 'Ok' button.
- Buttons:** 'Activate' and 'Exit' buttons. An orange arrow points to the 'Activate' button from callout 7.

Callout 6 (orange box): Copy-paste the License Key found in the USB flash disk, from the file License_key.txt...

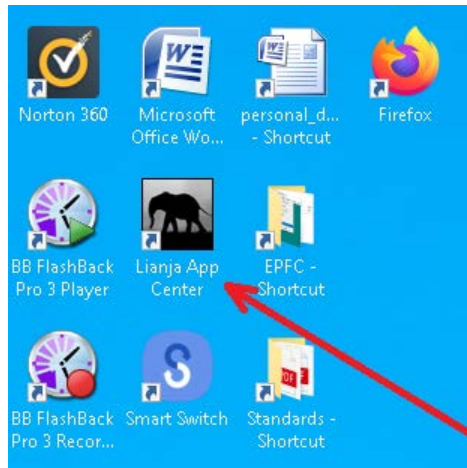
Callout 7 (orange box): Click 'Activate' button. You will be prompted successful if the License Key matches the registration code of the PC running it.

Footer text: Type-in the name of the licensee and press the ENTER key to enable the OK button.

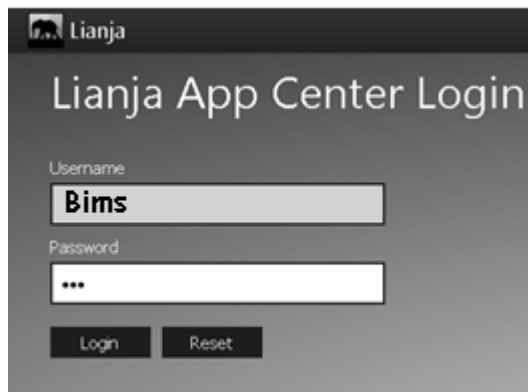
6. Congratulations! All the apps are activated!

How to Run the Bims App

1. From your Windows desktop, click the Lianja App Center icon;



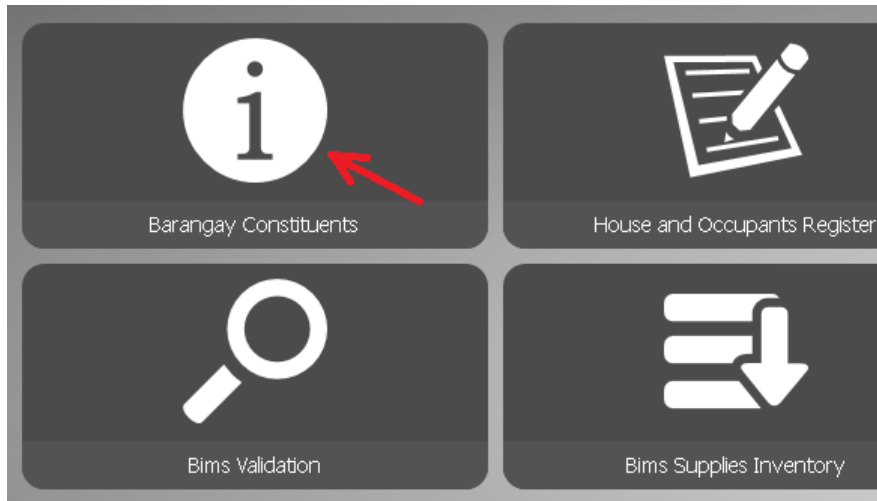
2. The Lianja App Center Login displays,
Username: "Bims"
Password: "Bims"
Then, click the Login button;



3. The App Center displays as shown below,



4. To run any of the 8 apps, click the corresponding icon. For example, you want to run the Barangay Constituents App, click its icon,



Important:

To Delete, or Edit, or do any action that would require authorization code, the Authorization Code is "12345"

How Bims App Works

Register your barangay constituents

It is a good idea to start organizing your database by collecting information of your barangay constituents. Send a team to the ground and conduct a house-to-house registration of the houses and its occupants. This app provides the interface to collect the data. You will need a laptop, a USB camera, and a USB fingerprint device. This records are dynamic, some constituents come and go. A field called "Start Residency" and "End Residency" are date fields where you can keep data when the person start residing in the barangay and the date he/she left the barangay for good.

Once you have your constituents registered, you can quickly check the following:

1. List of senior citizens in your barangay
2. List of your Tanod
3. List of your barangay officers
4. And, many other sectors thru the dialog panel custom-query builder

Once Barangay houses and its House-occupants are registered

Services can be easily downloaded to its constituents. Population report can be retrieved quickly and can be filtered according to the user's need thru the built-in query builder. Also, barangay certifications can be generated accurately from its database.

Social Activities of the barangay

Each activity can be recorded into the app and photo activities can be kept into the records of the individual participants.

Inventory App, how it works

First Step.

1. Plan well. When creating a product name, think of a tree. You have the roots, trunk, branches, and the leaves. The branches holds the leaves. The trunk holds the branches and the leaves. Naming our product is important because we cannot just change the name later on as that product will be associated with the other elements of the business. Like a tree, we organize our naming convention with a guide, and these guides are:
 - a. Product Name (*this is the leaf of our tree example*)
 - b. Product Type (*this is the branches in our tree example*)
 - c. Product Group (*this is the trunk in our tree example*)

Second Step.

1. Create the Product Type and Unit of Measure - (*Product Type Definition Section*)
2. Create the Product Group - (*Product Group Definition Section*)
3. Create a list of 'Issued To' names. During issuing of the goods, at the issue form, the field for **issued to** is selectable and the choices that are presented are pre-defined here. Whatever names you create as list, will become the choices in the issuance form.
4. Create a list of repetitive 'Remarks'. When you have this, and when you're issuing, you do not have to keep re-typing the field for remarks. You just select it from choices presented by the system. For example, in a sari-sari store business, you can include in the list "CREDIT", "CASH", etc. With these information in the database, you can print a report of a list of credit that a particular person has for a particular period!

3rd Step.

1. Create the *Product Masterlist*
2. Enter the *Products In* (goods received)
3. Enter the *Products Out* (goods issued)

As you enter transactions (goods received, and goods issued), the following fields programatically updates:

- a. *Balance*
- b. *Received*
- c. *Issued*

5th Step

1. Make Daily System Backup
2. Make Weekly System Backup
3. Make Monthly System Backup
4. Make Yearly System Backup

You can click anyone of the above at any time. The idea is you have several backups for your system data.

This App is provided with a Help at every Section

At the section form, to its upper-right-hand corner you'll see a '?' icon. When clicked, it opens the section help.

Please read the help in each section to give you the overall understanding on how this app works.

Simply put, this App can help you organize your barangay information data

Your database of barangay records will grow as the community grows. Repetitive tasks such as endless filling up of forms whenever you need information from your constituents, can now be avoided.

When you receive the goods, you place it in the store or warehouse and you mention it in the record where exactly you placed it.

When issuing, you know where it is by just looking at the '*current location*' field.

Each time you received the goods and after entering it in the system, 'CURRENT BALANCE', 'RECEIVED', and 'ISSUED' are shown at the right-hand side of the *INVENTORY* app. That is, every entry of transactions.

Reports are also available in this app

There are five(5) reports group, (1) Masterlist report, (2) Received Report, and (3) Issued Report, (4) Barangay Services Report, and (5) Barangay Population Report.

All reports can be queried via a custom-query dialog panel. Which means, you can drill-down to the field level of queries to suit your specific needs. Which further means, that your reports are not dependent only on how the programmer anticipated the kind of report you will need. It gives you the leeway to program it the way you want the reports to be, limited only by the fields available in the table! This feature is new and few apps in the market today has it!

If you have any questions regarding this app

Please contact:

ELIAS C. QUIJANO

Facebook: <https://www.facebook.com/elias.quijano.5>

<https://www.linkedin.com/in/elias-quijano-b9519528/>

Email: elias@epfcomposite.com

Website: <http://www.epfcomposite.com>

Globe Mobile: +63 917 179 9307

Bims App Copyright 2021 Certificate No.: N-2021-00597

Na-install na, at maayos ng tumatakbo ang software, ano ang mga unang hakbang para sa pagsisimula:

1. I-Register ang mga Kabahayan sa Nasasakupan
House and Occupants Register App > House Registration > Add
See video tutorial from Youtube: <https://youtu.be/4f9uRRUMLAo>
2. I-Register ang mga nakatira sa Bahay
House and Occupants Register App > Occupants Registration > Add
See video tutorial from Youtube: <https://youtu.be/4f9uRRUMLAo>
Sa pag register sa mga nakatira sa bahay, kakailanganin mo ng litrato (picture) at thumb mark ng mga nakatira, at i-save mo sa computer.
3. I-setup ang mga Pumipirma sa Barangay Certificate
System Settings App > Miscellaneous Setup > Edit
See video tutorial from Youtube: <https://youtu.be/Tc7ZHOrzH0g>
4. I-setup ang mga 'Purpose' ng pagkuha ng Barangay Certificate
System Settings App > Barangay Clearance Purpose > Purpose > Add
See video tutorial from Youtube: <https://youtu.be/45nbpeKgAts>
5. I-setup ang 'Occupation' List (kung wala yung hinahanap na 'Occupation' idagdag sa listahan)
System Settings App > Livelihood/Occupation > Add
See video tutorial from Youtube: <https://youtu.be/x7E-7AWOqL0>
6. I-setup ang 'Educational Attainment' List (kung wala yung hinahanap na 'Educational Attainment' idagdag sa listahan)
System Settings App > Educational Attainment > Add
See video tutorial from Youtube: <https://youtu.be/HpIVTxGrFdM>

Iba pang Tutorial Videos na nasa Youtube:

1. How to replace barangay logo and letterhead
<https://youtu.be/My4LBp85L3k>
2. How to get Barangay Services Report for a specific period.
<https://youtu.be/NDLPIUKxPHE>
3. How to get incoming Supplies Report
<https://youtu.be/l2KsDGpNXGs>
4. How to Input and Print a Person's Rap sheet.
<https://youtu.be/deawgRaaSiQ>
5. How to Add a Barangay Activity in Constituents App
<https://youtu.be/Fhmy3ECt2gA>

6. How to Filter Records in Constituents App
<https://youtu.be/gaVx-3JoIEo>
7. How to Create a Barangay Clearance in Auto Mode
<https://youtu.be/SFTK67ahxjs>
8. How to Create a Barangay Clearance in Manual Mode
<https://youtu.be/vLNubJDm9Uo>
9. How to get Issuance Supplies Report
<https://youtu.be/xl6v0j5NeLI>
10. How to get Supplies Masterlist Report.
<https://youtu.be/la7YcMIRHQA>